

Further Thoughts

- The single ingredient necessary to make crystal (d-meth) is ephedrine/pseudoephedrine.

- “In addition to abuse and use to make meth, pseudoephedrine has undesirable side effects, including central nervous system stimulation, lightheadedness, nervousness, anxiety, paranoia, heart arrhythmia, atrial fibrillations and premature ventricular contractions.”

- United States Patent 6,495,529 (Booth, *et al*) (Warner-Lambert, nka Pfizer) (December 17, 2002), column 1, lines 57 *et seq*, citing 95 American Hospital Formulary Service 847-48.

- In states that have moved pseudoephedrine to full Schedule V (behind the pharmacy counter) or Schedule III (prescription only), nearly all of the former pseudoephedrine products have been reformulated with phenylephrine and are back on regular retail shelves.

- The real impact on legitimate consumers has therefore been almost nonexistent.



INTRODUCING
NEW REFORMULATED SINE-OFF.
Works to fight colds, flu, sinus congestion,
and the devastating effects of Meth abuse.

- Moving pseudoephedrine to full Schedule V or Schedule III helps to further drive the world market away from pseudoephedrine.

Questions?

Rob Bovett, Legal Counsel
Oregon Narcotics Enforcement Association
rbovett@co.lincoln.or.us
(541) 265-4108

Craig Durbin, Captain
Oregon State Police
craig.durbin@state.or.us
(503) 378-3720 ext 4127



More Info

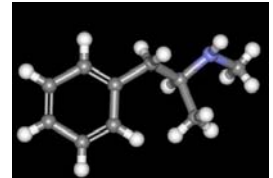
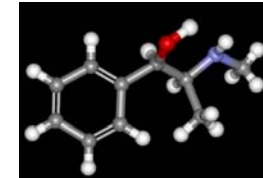
Questions? Comments? Feel free to contact us at the e-mail addresses or phone numbers listed above.

In addition, most of the studies, data, and legislation that form the basis for this pamphlet are posted at www.oregondec.org



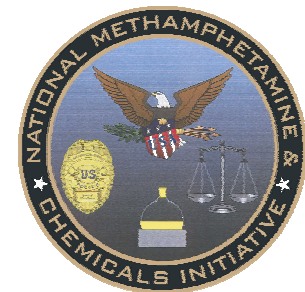
OREGON ALLIANCE
FOR DRUG ENDANGERED CHILDREN
Rescue. Defend. Shelter. Support.

A Case for Quickly Moving Pseudoephedrine



to Schedule III (prescription only)

Presented at the annual conference of the



Dallas, Texas
May 17-18, 2006

A Case for Quickly Moving Pseudoephedrine to Schedule III (prescription only)

A

Small Toxic Labs

- Local small toxic meth labs (STL's) (under 2 pounds per reaction) account for ~ 35% of the meth on our streets.



- Crystal meth costs about \$40 per gram on the street, but it costs only about \$5 per gram to make in an STL.

- Moving pseudoephedrine (PSE) to Schedule V lite (behind the counter, but not pharmacy only) results in ~ 40-60% reduction in STL's.



- Moving PSE to Schedule V (behind the pharmacy counter) results in ~ 70-90% reduction in STL's.

- After moving PSE to Schedule V, the remaining STL's are primarily driven by (a) interstate smurfing of PSE; and (b) intrastate group smurfing of PSE.

- To address group smurfing, Oregon has moved to Schedule III (prescription only).

- To address interstate smurfing, Subtitle A of the Combat Meth Epidemic Act (CMEA) moves the entire Nation to Schedule V lite (not Schedule V!).

B

Super Labs

- Large (2-10 lbs), super (10-100 lbs), and super duper (100 lbs +) meth labs account for ~ 65% of the meth on our streets.



- Subtitle B of the CMEA provides for international tracking and control of PSE feeding these super labs.

- The actions described in part A (to the left) have been driving the legitimate market from PSE to phenylephrine (PE). This has already resulted in the closure of one of the world's nine large PSE factories, and completely shut down PSE production in one of the world's four PSE producing nations.

- Recent United Nations (UN) actions have put further pressure on PSE source nations to track and report shipments of PSE to prevent diversion to the super labs.



- Preliminary results appear to indicate that the actions described above are reducing the available supply of PSE diverted to the super labs, and therefore meth purity levels are beginning to decline.

C

Conclusion

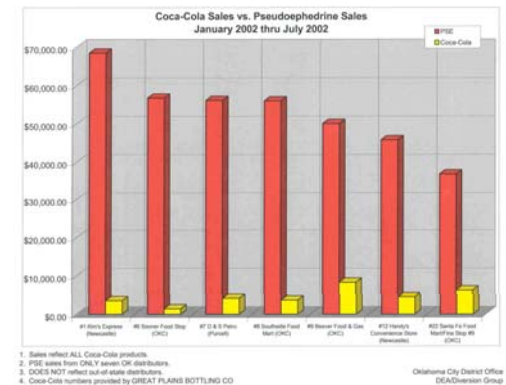
- If the preliminary results described in Part B (to the left) continue and have the desired effect on super labs, individual states that have not moved PSE to Schedule III (or at least full Schedule V) may experience a significant resurgence of PSE smurfing and local small toxic meth labs to fill the resulting gap in supply.



- This is potentially very bad news for public safety, the environment, and especially drug endangered children.

- In light of recent events, leaving any PSE products in convenience stores is a recipe for disaster.

- Be proactive: Move quickly to protect your state. Adopt Schedule III for PSE.



1. Sales reflect ALL Coca-Cola products.
 2. PSE sales from ONLY seven OR distributors.
 3. DOES NOT reflect out-of-state distributors.
 4. Coca-Cola numbers provided by GREAT PLAINS BOTTLING CO.

Oklahoma City District Office
 DEA/Hansen Group